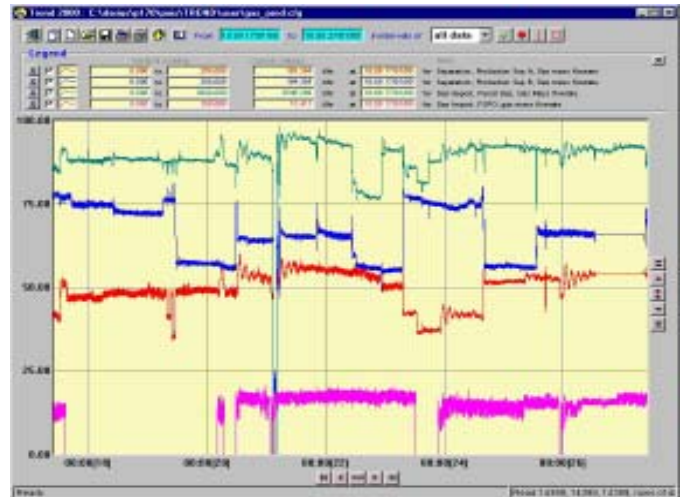


# Trend 2000

Our popular Trend 2000 product is a generic PC software tool that can be used to illustrate time-series data from both on-line real-time data source and histories stored in a SQL compliant database.

Trend 2000 provides fingertip facilities to :-

- use the tool in on-line mode to track process developments
- easily visualise relationships in the data
- zoom to examine interesting scenarios in detail
- export information for analysis in other tools
- print plots of interest
- save different setups for reuse on a regular basis



## Operation ...

Trend 2000 is run from the user desktop, initially it displays as a floating function toolbar. Multiple copies of Trend 2000 can be run concurrently displaying up to 12 parameters on each instance.

From the toolbar users may select to display an existing trend data set or create a new one from scratch using a intuitive navigation menu that guides users to the data they wish to examine.

Once defined trend can be run in both “on-line” and “historical” mode depending on whether users wish to monitor an operation in progress or review historical data. Each parameter track can be individually scaled, colours changed or data points highlighted using symbols.

A dynamic rubber band box is used to zoom data of interest and this information can be exported if required. Pan controls in the margin areas also allow the data window to be adjusted as required.

### Customer Reference List ...

**Amerada Hess**

**BP**

**ConocoPhillips**

**Lundin Britain**

**Occidental**

**Petro Canada**

**Talisman**

**Total**

Delivery of effective data gathering, information delivery and management tools to the international hydrocarbon production and processing industries through innovation and partnership with our customers is our business.

# Trend 2000...

## Configuration ...

Trend 2000 is configured with a series of simple text setup files. These define:-

- database connections
- the organisation and structure of the source data
- navigation hierarchy
- environment
- defaults for trend startup

These configuration files can be stored either locally or globally (on shared network drive) in order to establish individual or group settings as required.

Interactively users can choose how the three data display areas are shown, if there is to be a grid, tick marks, background colours etcetera.

Other very useful features include the ability to “extract” the SQL queries used by Trend allowing them to be re-used in other user applications.

## Real Time Data Sources supported ...

Trend 2000 can display information from a real-time database complying with any of the following protocols:-

- OPC
- Aquidata Excel AQSrv and IPC

## Historical Data Sources supported ...

Trend 2000 can retrieve and display historical information from any SQL compliant database using ODBC, OPC HDA or a native protocol. Database products supported include:-

- Oracle V7 or later
- MySql
- SQL Server

## Environment Requirements ...

Trend 2000 is a ‘light weight’ application requiring the following minimum specification for the user workstation:-

- MS Windows 98 or later version
- 486 processor or better
- 64 Mbytes of RAM
- 1M of hard disk
- A network connection (if source database is not on user PC)

